

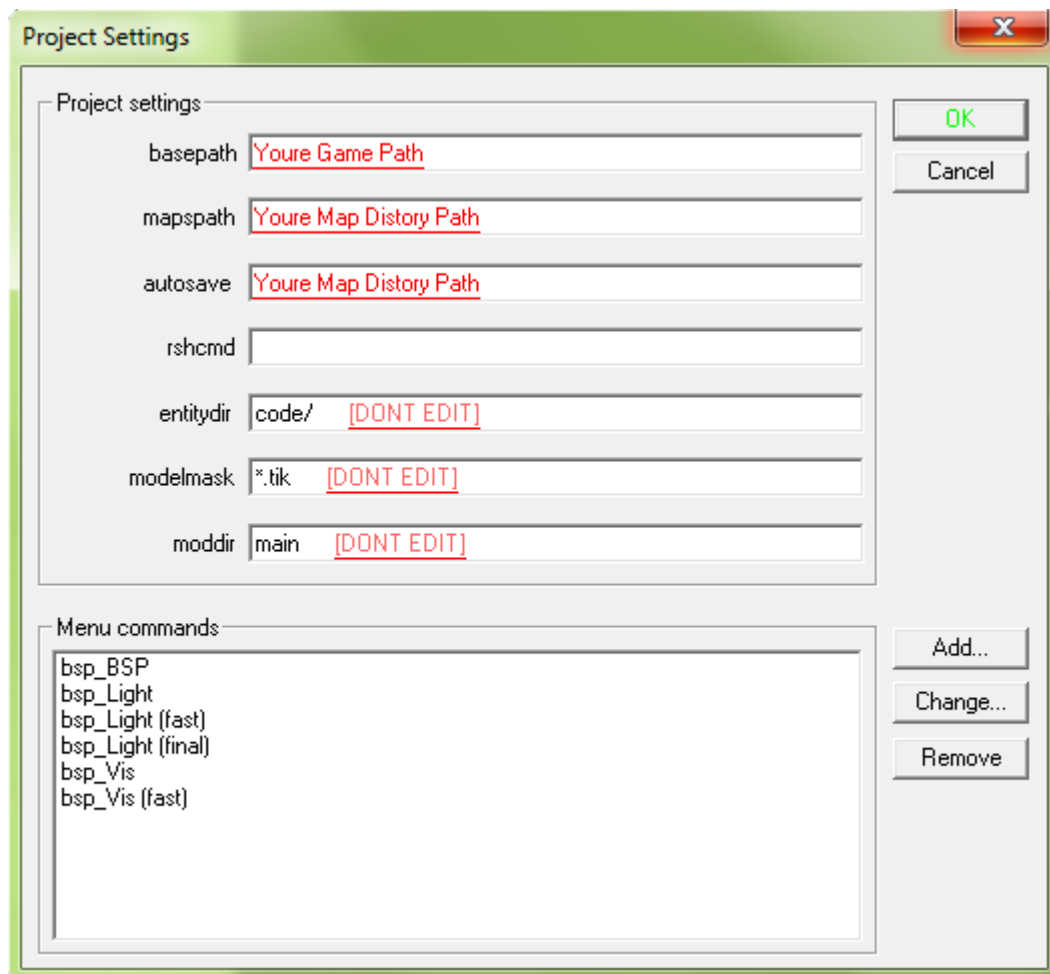
Welcome to the mohaa mapping basic tutorials.

Installation Mohrradiant:

1: Start Mohrradiant.exe

2: Go to [File] / Project Setting.

3: Follow the instruction bellow here.

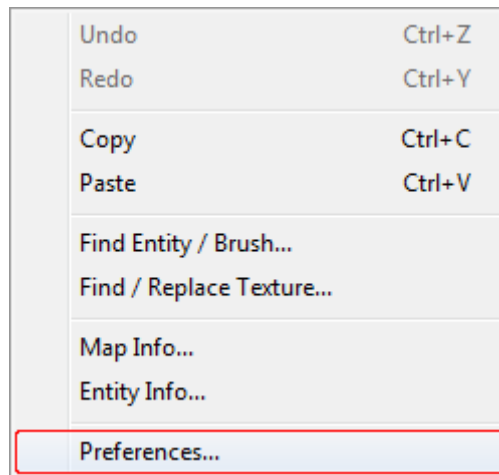


4: And press **OK**

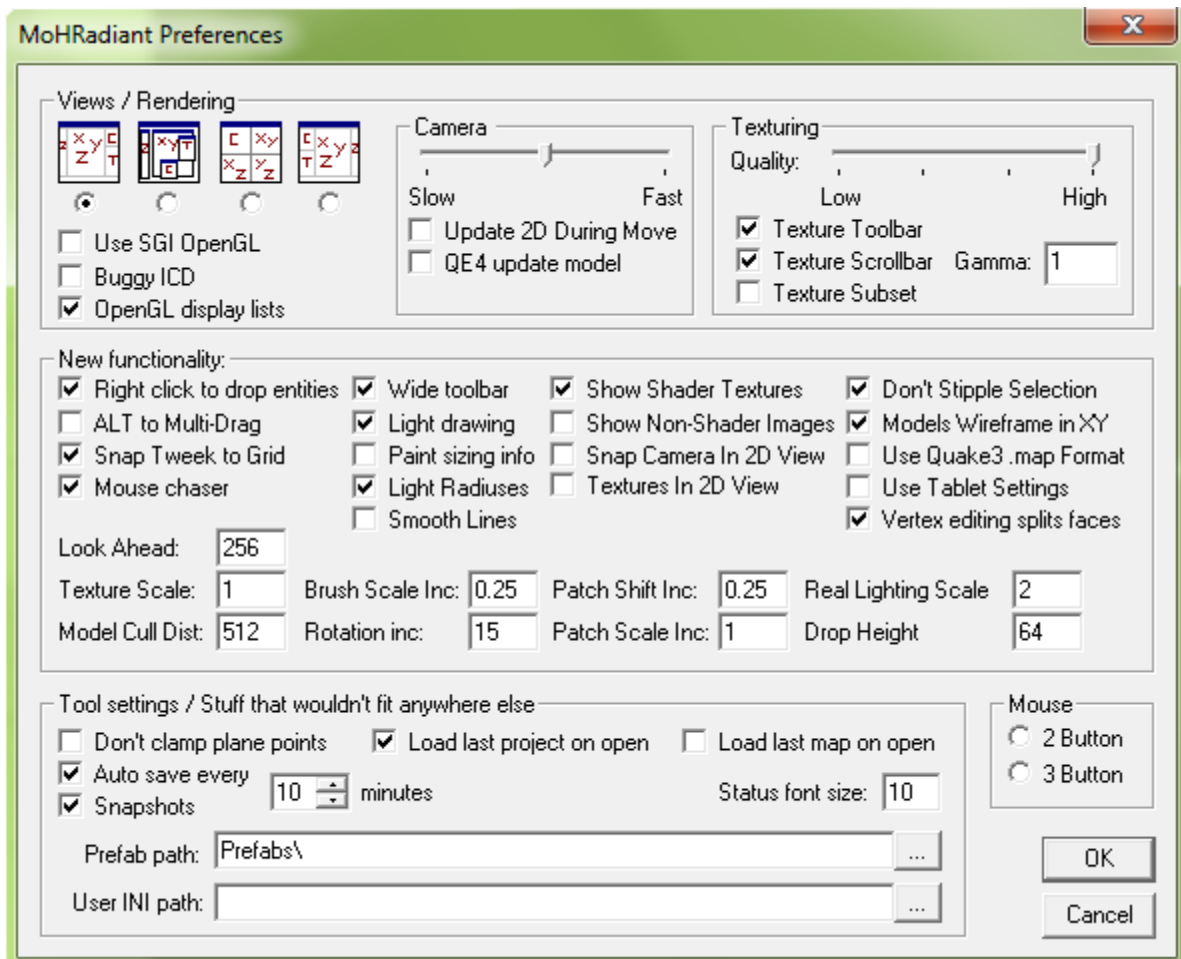
5: And restart Mohrradiant.

6: Go to [Edit] / Preferences

7: And follow the bellow instructions.



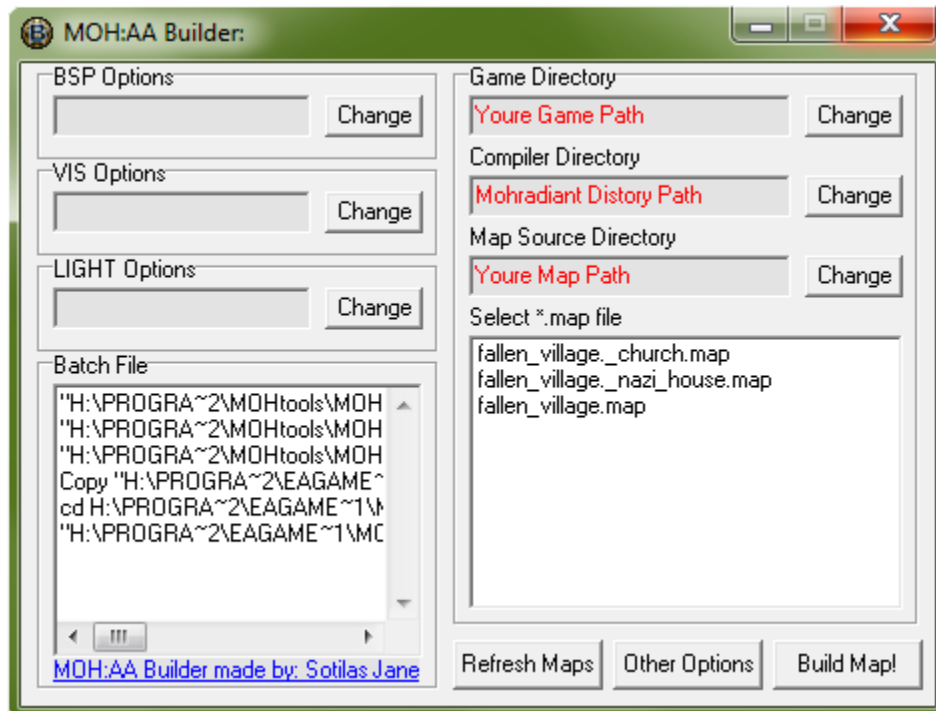
8: Make it the same as the picture bellow here.



Instalation MBuilder:


1: Start MBuilder.exe

2: Follow the instructions in the picture bellow here.



Preformens:

Hit the Button  to see the full map.

Hit the button  again and you will not see the full map

Preview:

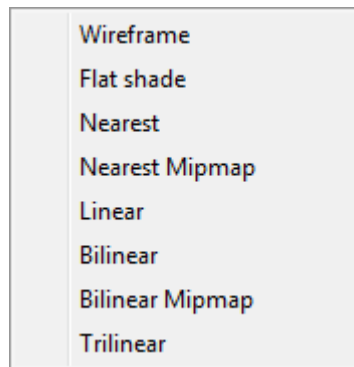
On:



Off:



Hit the button  to select texture Preformens

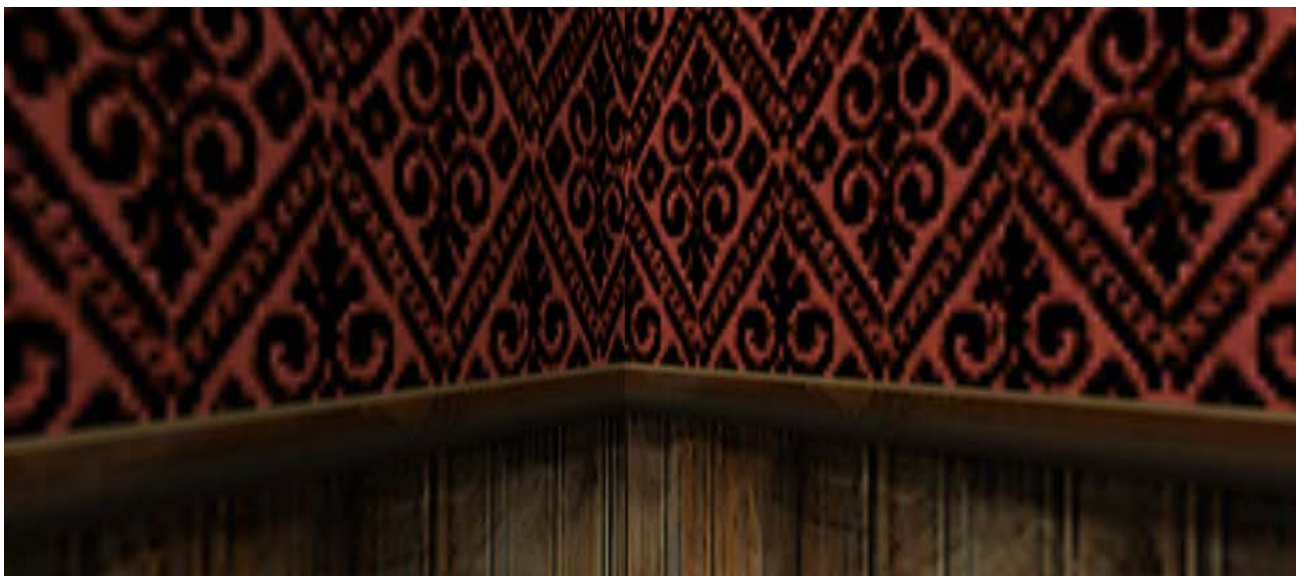



Preview:


Normal [Nearest]:



Fast [Trilinear]:



Hit the button  to make some texture's masked

And hit the button  again to make some texture's no masked

Preview:

Masked:



No masked:

